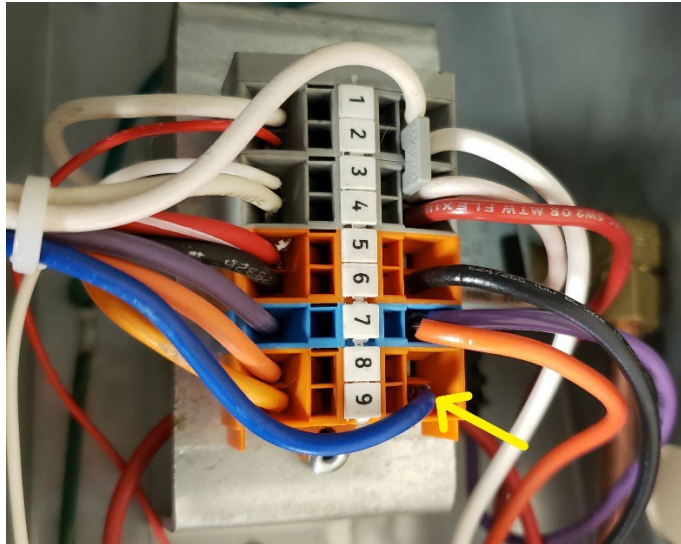


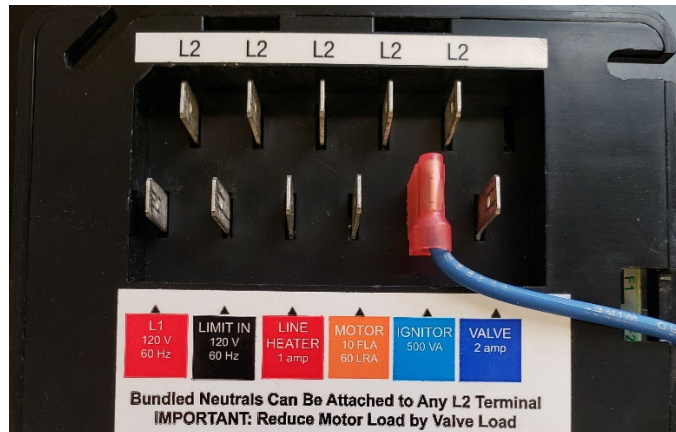
# Intermittent Spark Upgrade

(For use with 8982 primary control) (Extends life of ignitor transformer and electrodes)

1. Disconnect blue transformer wire from multi-colored terminal block inside burner (your block color may differ from the one shown in the picture).



2. Connect supplied blue wire to the Ignitor 500VA terminal on oil primary control.



3. Wire nut the blue wire from the transformer to the newly connected blue wire coming from the oil primary control.

